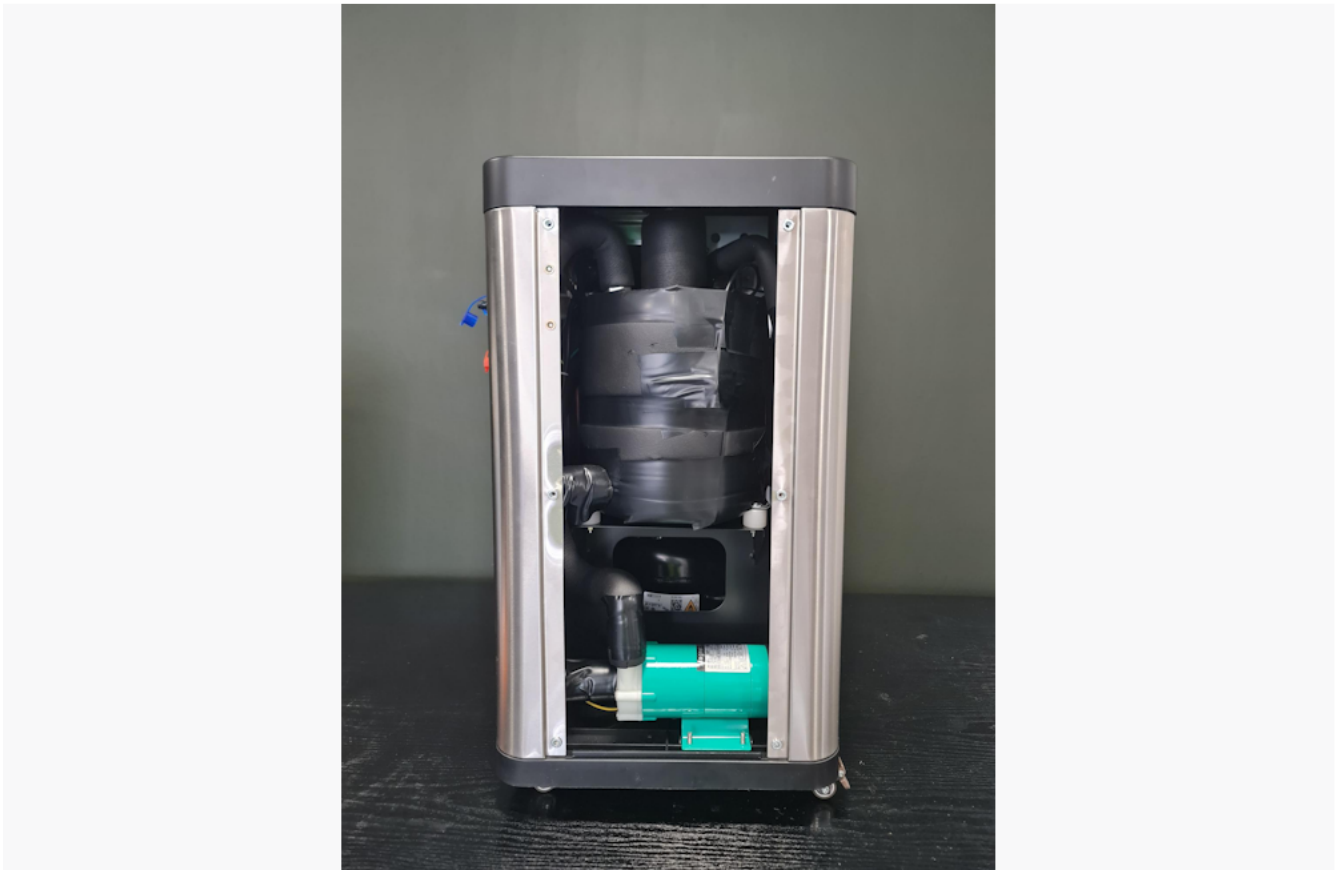




Glycol Chiller GC2 Infra-red low level sensor replacement

The explanation was created in Stonly

Remove the side panels



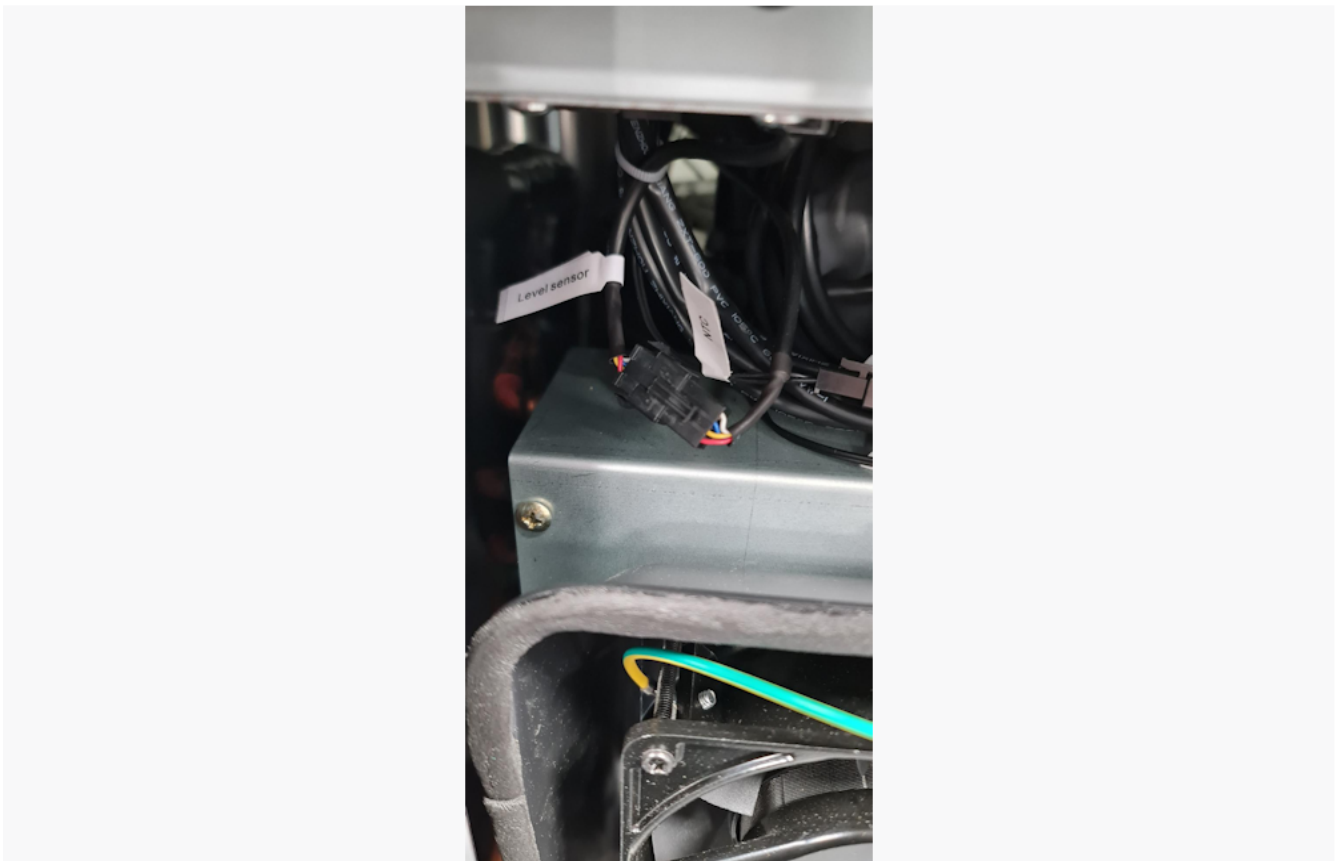
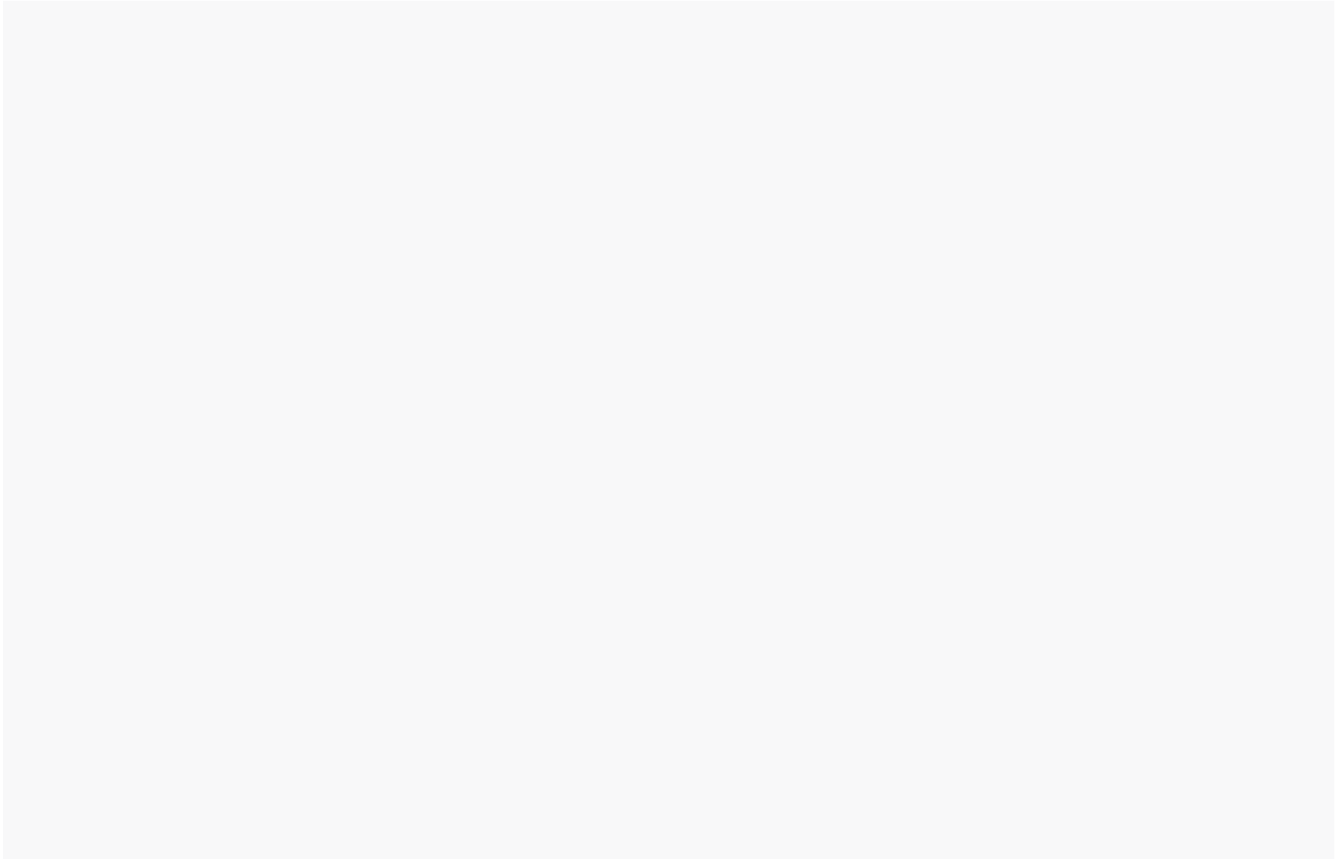
Remove the side panels

Remove the side panels by unscrewing the 12 hex bolts (6 on each side)

Next →

Go to **Page 4**

Locate the Level sensor cable



Locate the Level sensor cable



Located the Level sensor cable and disconnect the connector.

Next →

Go to [Page 6](#)

Remove the insulation tape around the level sensor



Remove the insulation tape around the level sensor

Remove the insulation tape to access the level sensor.

Next →

Go to **Page 8**

Remove the level sensor



Remove the level sensor

Using a spanner, remove the level sensor from the tank.

Next →

Go to **Page 10**

Replace the level sensor

Replace the level sensor by following these instructions in reverse order, once completed replace the insulation tape removed earlier.

A leak test is advised to ensure all connections are tight prior to reassembly

If any issues are encountered please contact Grainfather support